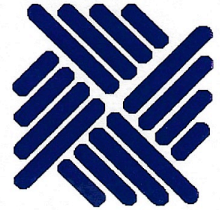


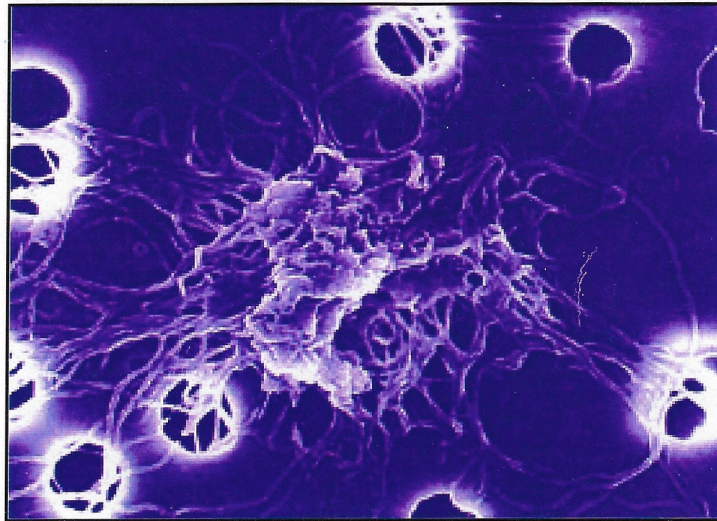
#22 4/6-7/02
**15th International Scientific
Conference on Lyme Disease &
other Tick-Borne Disorders**



*Jointly sponsored by:
The College of Physicians and
Surgeons of Columbia University
and the Lyme Disease Foundation*



Diagnosis, Treatment & Research Update
April 6-7, 2002
Hartford Marriott, CT



This activity has been planned and implemented in accordance with the Essential Areas and Policies of the Accreditation Council for Continuing Medical Education (ACCME) through the joint sponsorship of the College of Physicians & Surgeons of Columbia University and the Lyme Disease Foundation.

The College of Physicians & Surgeons of Columbia University is accredited by the Accreditation Council for Continuing Medical Education (ACCME) to sponsor continuing medical education for physicians.

The College of Physicians & Surgeons designates this educational activity for a maximum of 16 hours in Category 1 credit towards the AMA Physician's Recognition Award. Each physician should claim only those hours of credit that he/she actually spent in the educational activity.



LYME DISEASE FOUNDATION

1 Financial Plaza, Hartford, CT 06103

860-525-2000 Fax 860-525-8425 Hotline 800-886-LYME Lymefnd@aol.com www.Lyme.org

INDEX

Letter from the Executive Director

Program Committee and Faculty

Target Audience, Conference Goals

Speaker Disclosures

Program Agenda

Speaker Abstracts

Poster Presenter Abstracts

Related Articles

Conference Supporter Advertisements


Thomas F. Fletcher, Executive Director

LDF LYME DISEASE FOUNDATION

1 FINANCIAL PLAZA, HARTFORD CT 06103

860-525-2000 FAX: 860-525-TICK 24-HR HOTLINE: 800-886-LYME WWW.LYME.ORG

April 6, 2002

Thomas Forschner, MBA, CPA
Executive Director

Chris Malinowski
Editor, LYME LIGHT
Communications

Ronald F. Schell, PhD
Editor-in-Chief
*Journal of Spirochetal
and Tick-borne Diseases*

Leonard Shucksman, DO
Webmaster

BOARD OF DIRECTORS

John F. Anderson, PhD
Director, CT Agricultural Exp. Sta.
Discoverer of bacterium
Borrelia andersoni

Edward F. Bader, CPA
Partner, Arthur Andersen & Co.

Berkley W. Bedell
U.S. Congressman, retired
Founder, Berkeley Industries

Willy Burgdorfer, PhD, MD (hon)
Discoverer of the Lyme bacterium
Borrelia burgdorferi
Scientist Emeritus
National Institutes of Health

Frank Demarest
Electrical Engineer, Zygo

Joseph H. Fisher, CPA
Vice Chair, Board of Directors
Business Consultant
KPMG, Managing Partner, retired

Thomas Forschner, MBA, CPA
Executive Director, LDF

Richard T. Gerstner
CEO, CVOICE, Inc.
Business Consultant

John Horak
Principal, Reid and Reige

Ira Maurer, JD
Partner, Cahill and Goetsch

James N. Miller, PhD
Professor, UCLA School of Medicine

Julie Rawlings, MPH
Epidemiologist
Texas Department of Health

Ronald F. Schell, PhD
Professor, University of
Wisconsin School of Medicine
Chief, Wisconsin State Labora-
tory of Hygiene

Karen Vanderhoof-Forschner
BS, MBA, CPCU, CLU
Chair, Board of Directors
Author, Management Consultant

Dear Friends:

Thank you for attending the Lyme Disease Foundation's 15th Annual Conference on Lyme Disease and Other Tick-Borne Disorders. The last year has been a tumultuous one, as the tragic events of September 11 forever changed our country and the world. Our thoughts and prayers go out to all affected.

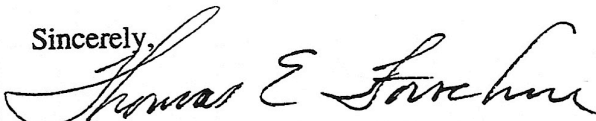
To an obviously much lesser degree, the tick-borne disease front during 2001 was also tumultuous. The Klempner retreatment study was spun to and reported by the lay press as proof active infection is not responsible for persistent symptoms in all patients previously treated for Lyme disease. Lyme disease physicians continue to face harassment and censure from state licensing boards and other agencies. Obviously, much work remains towards obtaining a better understanding of these diseases, and creating an atmosphere where physicians can treat patients to the best of their ability, free from outside interference.

On a lighter note, 2001 also contained positive developments. Greater understanding of the role the autoimmune phenomena plays in the (Lyme) disease process continues to come to light, some of which you will learn about during this conference. In addition, the LDF, Lyme Disease Society, and other organizations also helped get the Lyme and Infectious Disease Information & Fairness and Treatment (LIFT) Act introduced into Congress. Among other highlights, the bipartisan bill (Senate bill 969, House bill 2118) offers enormous potential to balance the approach of Federal research into Lyme disease and all tick-borne disorders. I urge everyone to learn about the bill and do your best to support it.

Unfolding events during the first few months of this year exemplify how extremely important it is that our effort to combat tick-borne disorders continues. The latest statistics released by the Centers for Disease Control and Prevention revealed 2000 reported record-high cases of Lyme disease. The recently announced discontinuation of the Lyme vaccine reveals the continued need for a safe and effective vaccine.

By taking the time to attend this conference, you are doing a significant part to facilitate a greater understanding of these often-debilitating disorders. It is greatly appreciated.

Sincerely,



Thomas Forschner, Executive Director

The premier nonprofit working in partnership to find solutions to tick-spread disorders

PROGRAM COMMITTEE

James Miller, PhD *UCLA School of Medicine*
Sam Donta, MD *Boston University School of Medicine*
Brian Fallon, MD *Columbia University College of Physicians & Surgeons*
Ed Bosler, PhD *SUNY at Stony Brook School of Medicine*
Charles Pavia, PhD *New York Medical College*

FACULTY

John Anderson, PhD *Connecticut Agricultural Experiment Station*
Edward M. Bosler, PhD *SUNY at Stony Brook School of Medicine*
Carolyn Britton, MD *College of Physicians and Surgeons of Columbia University*
Steve Callister, PhD *Gundersen Lutheran Medical Center*
Sam Donta, MD *Boston University School of Medicine*
Brian Fallon, MD, MPH *College of Physicians and Surgeons of Columbia University*
Paul T. Fawcett, PhD *Alfred I. duPont Hospital for Children*
Lesley Fein, MD, MPH *Mountainside Hospital*
Mark Geier, MD, PhD *Genetic Centers of America*
Dan Haley *Author, "Politics in Healing", NY Legislator, retired*
Ami Katz, MD *Yale University School of Medicine*
Lauren Krupp, MD *Suny at Stonybrook School of Medicine*
Norman Latov, MD, PhD *Weil Medical College at Cornell University*
Ken Liegner, MD *Private Practice*
Lony Lim, PhD *Specialty Laboratories*
Louis Magnarelli, PhD *Connecticut Agricultural Experiment Station*
Edwin Masters, MD *Southeast Missouri Hospital, St. Francis Medical Center*
Eli Mordechai, PhD *Medical Diagnostic Laboratories*
David Nelson, PhD *University of Rhode Island*
William Nicholson, PhD *Centers for Disease Control and Prevention*
Charles Pavia, PhD *NY Medical College School of Medicine*
NY College of Osteopathic Medicine
George Perides, PhD *Harvard Medical School*
Dorothy Pietrucha, MD *Jersey Shore Medical Center, Meridan Health System*
Julie Rawlings, MPH *Texas Department of Health*
Russ Regnery, PhD *Centers for Disease Control and Prevention*
Scott Samuels, PhD *University of Montana*
Jon Skare, PhD *Texas A & M University System Health Science Center*

TARGET AUDIENCE

This conference is designed for clinical professionals (including but not limited to Physicians, Nurse Practitioners, Physician Assistants, Public Health Officers, Researchers and Veterinarians) and other health professionals (medical directors, risk managers) who wish to enhance their knowledge of Lyme disease and other tick-borne disorders.

CONFERENCE GOALS

- a. Recognize the complex nature of *Borrelia burgdorferi* in both in terms of its antigenic variability and the host response to infection;
- b. Understand the rationale for different treatment approaches to Lyme disease in animals and humans;
- c. Clarification of the role of diagnostic tests for Lyme disease;
- d. Understand the presentations of neurologic Lyme disease in children and adults, including the role of neuropsychological testing and neuroimaging;
- e. Understand the epidemiology, clinical phenomenology, and diagnostic methods for detecting other vector-borne diseases, such as babesiosis, ehrlichiosis, Rocky Mountain spotted fever, and West Nile virus;
- f. Understand relevant research regarding these diseases.

DISCLOSURE

Before the program, all faculty will disclose the existence of any financial interest and/or other relationship(s) (e.g. employee, consultant, speaker's bureau, grant recipient, research support, stock ownership or any other special relationship) they might have with a.) the manufacturer(s) of any commercial product(s) to be discussed during their presentation and/or b.) any commercial contributor to this activity. When unlabeled uses are discussed, these will also be indicated by an asterisk (*). Note: only ceftin has an FDA indication for use in LD.

<u>Speaker</u>	<u>Disclosure</u>
John F. Anderson, PhD	None
Edward Bosler, PhD	None
Carolyn Britton, MD	None
Steve Callister, PhD	None
Sam Donta, MD*	None
Brian Fallon, MD, MPH	None
Paul T. Fawcett, PhD	None
Lesley Fein, MD, MPH	None
Mark Geier, MD, PhD	None
Dan Haley	None
Ami Katz, MD*	None
Lauren Krupp, MD*	Consultant, Roche Pharmaceuticals
Norman Latov, MD, PhD	Consultant, Quest Diagnostics
Kenneth Liegner, MD	None
Loni Lim, PhD*	Share holder, Research Support, Specialty Laboratories
Louis Magnarelli, PhD	None
Edwin Masters, MD	None
Eli Mordechai, PhD	Vice President, Medical Diagnostic Laboratories
David Nelson, PhD	None
William Nicholson, PhD	None
Charles Pavia, PhD	None
George Perides, PhD	None
Julie Rawlings, MPH	None
Russ Regnery, PhD	None
Scott Samuels, PhD	None
John Skare, PhD	None

TIMES OF PRESENTATIONS AT XV INTERNATIONAL LYME CONFERENCE ' 02

Program 8am-5:30pm

Saturday, April 6, 2002

Registration 7:30am - 9:00am

Keynote

8:00 Dan Haley, Author of *Politics of Healing*, Former NY Legislator **Keynote**

New Research Findings on Lyme Disease

- 8:30 Starvation stress response of *Borrelia burgdorferi* - David Nelson, PhD *University of Rhode Island*
9:00 *Borrelia burgdorferi* response to limiting oxygen: Implications for the vector-mammal life cycle - Jon Skare, PhD *Texas A & M University Health Science Center*
9:30 Activation of synoviocytes in post-Lyme patients - Paul Fawcett, PhD *Alfred I. duPont Hospital for Children*
10:00 **Break**
10:15 Pathogenesis of neuroborreliosis - George Perides, PhD *Harvard Medical School*
10:45 *Discussion and questions*

Diagnosis and Treatment Issues I

- 11:05 Neurologic manifestations of Lyme disease - Carolyn Britton, MD *The College of Physicians and Surgeons of Columbia University*
11:35 A rational treatment approach to chronic Lyme disease - Amiram Katz, MD *Yale University School of Medicine*
12:05 NIH-funded double-blind placebo-controlled trial of IV treatment for post-Lyme fatigue - Lauren Krupp, MD *SUNY at Stony Brook School of Medicine*
12:35 **Lunch**
1:35 Profiles of chronic Lyme disease from the NIH clinical trial - Brian Fallon, MD *The College of Physicians and Surgeons of Columbia University*
2:05 Early Lyme disease: Human tick-bite and experimental animal treatment studies - Charles Pavia, PhD *New York Medical College School of Medicine, New York College of Osteopathic Medicine*
2:35 *Discussion and questions*
2:55 **Break**

New Tests for Tick-borne Disorders

- 3:10 New clinical assays: C-6 peptide, Borrelidical assay - Lony Lim, PhD *Specialty Laboratories*
3:40 Correlation of borrelidical antibody response with *Borrelia burgdorferi* infection - Steve Callister, PhD *Gunderson Lutheran Medical Center*
4:10 Pivotal role of PCR in the detection of coinfections - Eli Mordechai, PhD *Medical Diagnostic Laboratories*
4:45 Improvements in serologic testing for Lyme disease and ehrlichiosis - Louis Magnarelli, PhD *Connecticut Agricultural Experiment Station*
5:15 *Discussion and questions*
5:30 **End of day**

Program 8am-5:30pm

Sunday, April 7, 2002

Registration 7:30am - 9:00

Bioterrorism Potential of Tick-borne Disorders

- 8:00 Vector-borne disease & bioterrorism preparedness: Tularemia, Q-fever, Venezuelan equine encephalitis, plague, relapsing fever - Julie Rawlings, MPH *Texas Department of Health* Willy Burgdorfer, PhD, MD(hon) *National Institutes of Health*
9:10 West Nile update, eastern equine encephalitis - John Anderson, PhD *Connecticut Agricultural Experiment Station*
9:40 **Break**
9:55 *Discussion and questions*

Diagnosis and Treatment Issues II

- 10:15 Genetic systems and antibiotic resistance markers - Scott Samuels, PhD *University of Montana*
10:45 Case Presentations: Amiram Katz, MD; Lesley Fein, MD; Kenneth Liegner, MD; Edwin Masters, MD; Sam Donta, MD
11:35 *Discussion and questions*

Other Tick-borne Disorders

- 11:55 The Southern and Eastern Tick Triads: Lyme disease, Master's disease, ehrlichiosis, babesiosis - Edwin Masters, MD *Southeast Missouri Hospital, St. Francis Medical Center*
12:25 **Lunch**
1:25 Ehrlichiosis update & changes in nomenclature - William Nicholson, PhD *Centers for Disease Control and Prevention*
1:55 Overview of Bartonella - Russ Regnery, PhD *Centers for Disease Control and Prevention*
2:25 New data on tick-borne infections: Bartonella and mycoplasma - Lesley Fein, MD *Mountainside Hospital*
2:50 *Discussion and questions*
3:05 **Break**

Sunday, April 7, 2002

Lyme Disease Osp-A Vaccine Adverse Events

- 3:20 Neurological complications of OspA-vaccinated patients - Norman Latov, MD, PhD *NY Weill Cornell Medical College*
- 3:45 Immunoreactivity related to Lyme disease vaccination - Paul Fawcett, PhD *Alfred I. duPont Hospital for Children*
- 4:15 Lyme vaccine reactivation of latent Lyme disease - Sam Donta, MD *Boston University School of Medicine*
- 4:40 Analysis of Lyme disease vaccine adverse event reports and comparison to other vaccine results - Mark Geier MD, PhD and David Geier *Genetic Centers of America*
- 5:05 *Discussion and questions*
- 5:30 ***End of Program***